

# Gifted Indicator for Local Report Card

In 2011, ORC 3302.02 required the State Board of Education to establish a gifted indicator reflecting the level of services provided to, and the performance of, students identified as gifted.

In late 2012, HB 555 outlined the requirements of the new A-F Report Card. This included a separate Value-Added component for students identified as Gifted.

HB 555 updated 3302.02 to specify that the gifted indicator shall include the performance of students identified as gifted on state assessments and value-added growth measure disaggregated for students identified as gifted.

# Gifted Rankings

House Bill 59 updated ORC 3302.21 with a requirement that the ODE produce several sets of **rankings** including “the Performance of, and opportunities provided to, students identified as gifted using the value-added progress dimensions, if applicable, and other relevant measures as designated by the superintendent of public instruction.”

These rankings were released for the 2013 report card. These rankings are themselves the average of three component rankings:

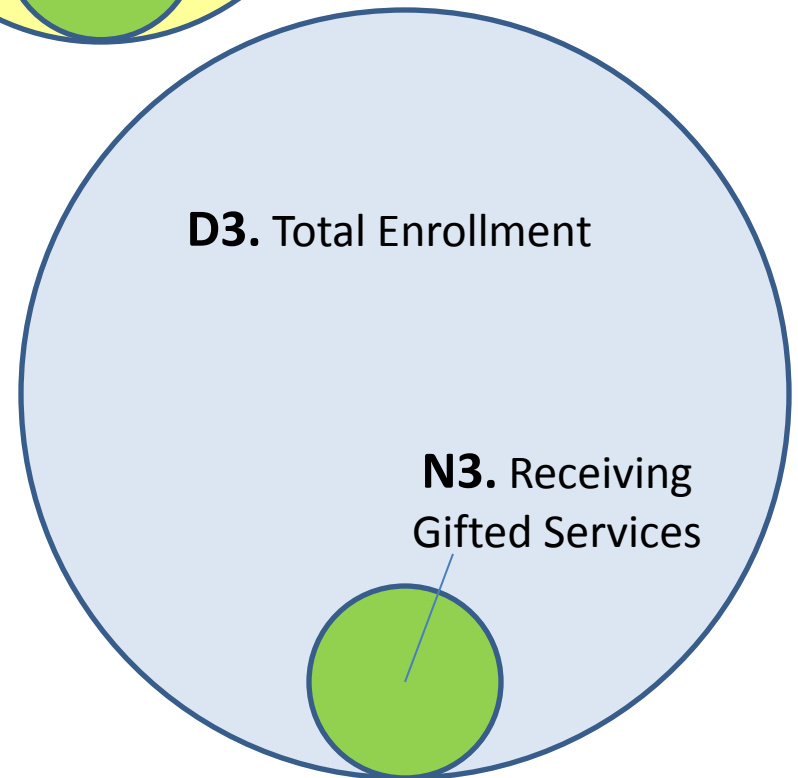
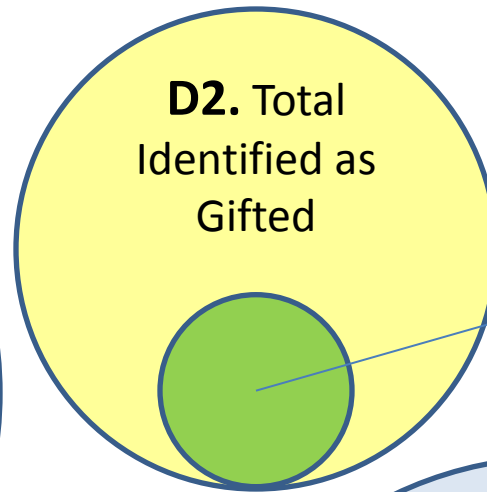
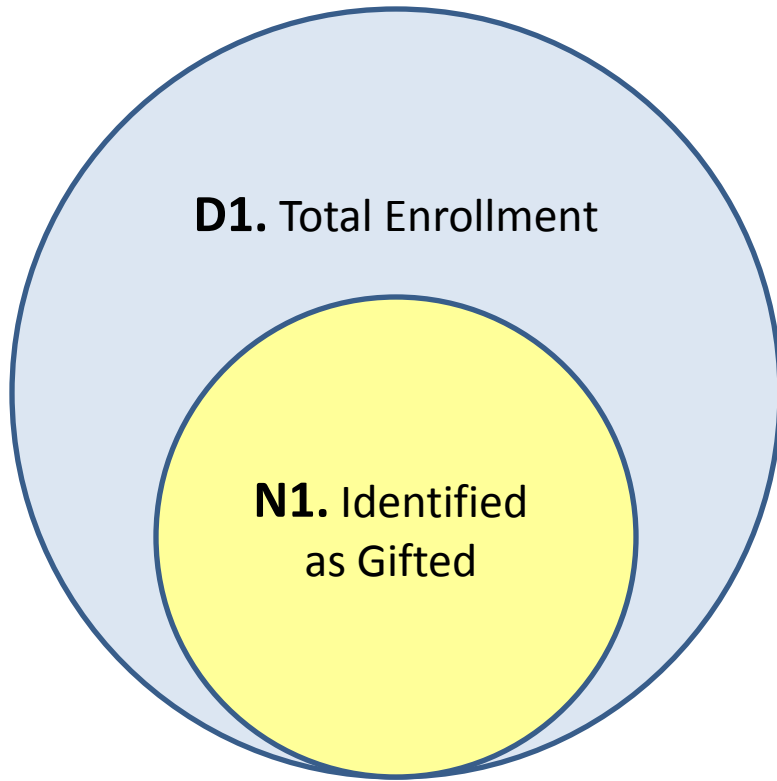
**Gifted Opportunity**  
**Gifted Performance**  
**Gifted Progress**

# Gifted Opportunity Index

The Gifted Opportunity Rank combines three measures into one Index:

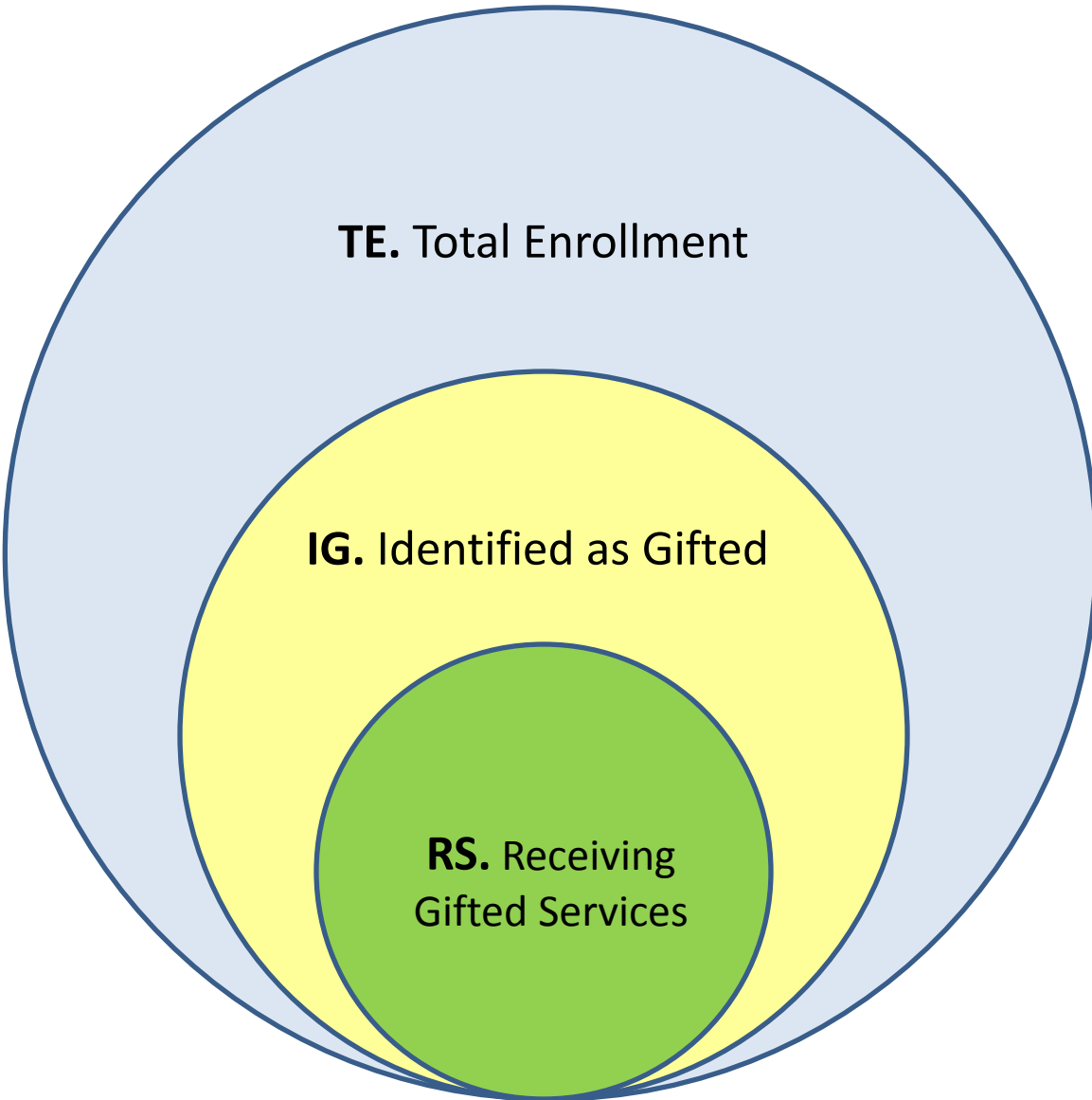
- Percentage of students identified as gifted (All categories)
- Percentage of IDENTIFIED students receiving gifted services (All categories)
- Percentage of ALL students receiving gifted services (All categories)

# Measures of Gifted Opportunity Index



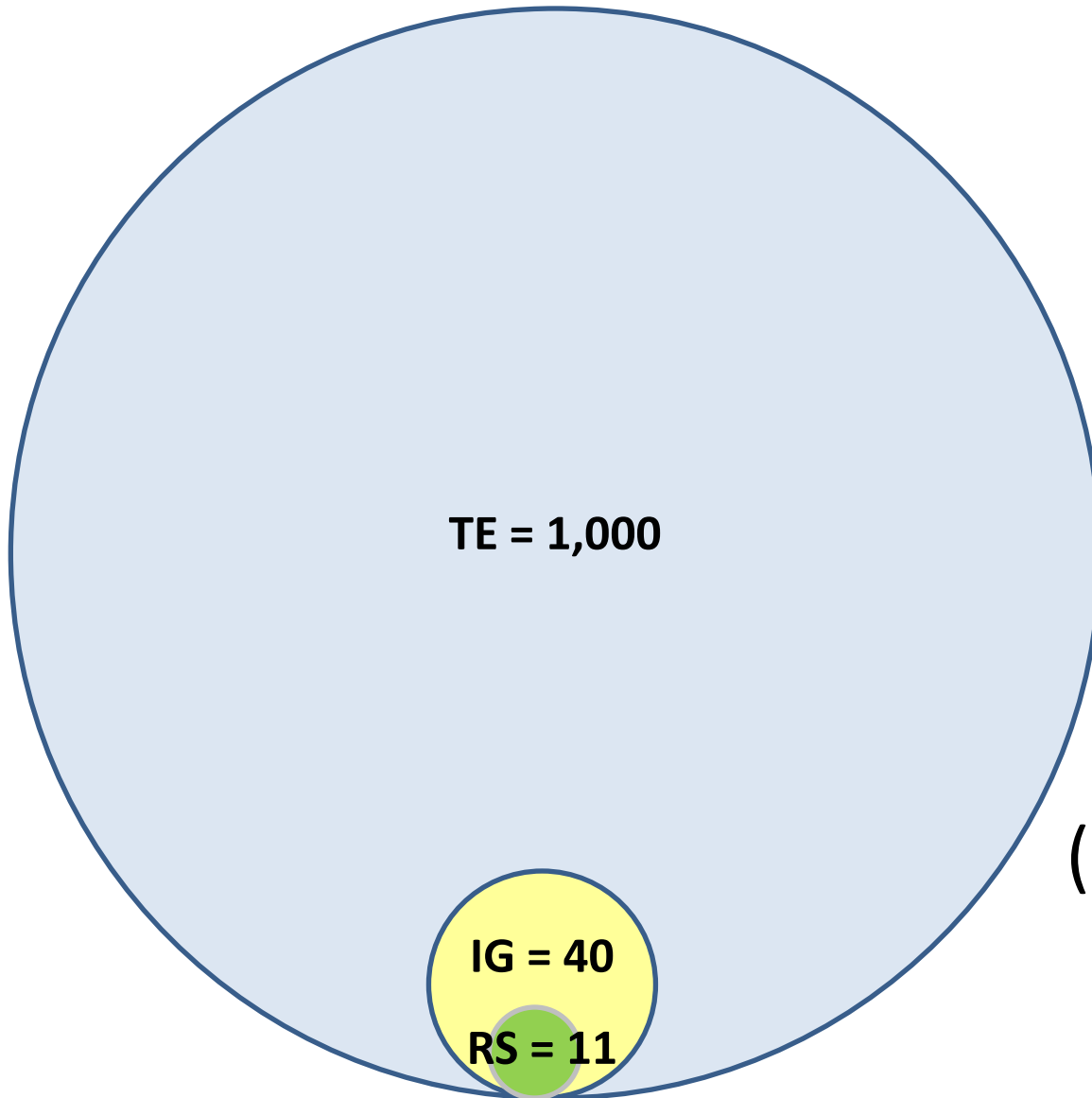
$$\frac{(N1 + N2 + N3)}{(D1 + D2 + D3)}$$

# Measures of Gifted Opportunity Index



% Identified as Gifted		% Served among those identified		% Served among total enrollment
( IG + RS + RS )		( IG + RS )		( TE + IG + TE )
-----				
( TE + IG + TE )		( TE + IG + TE )		( TE + IG + TE )

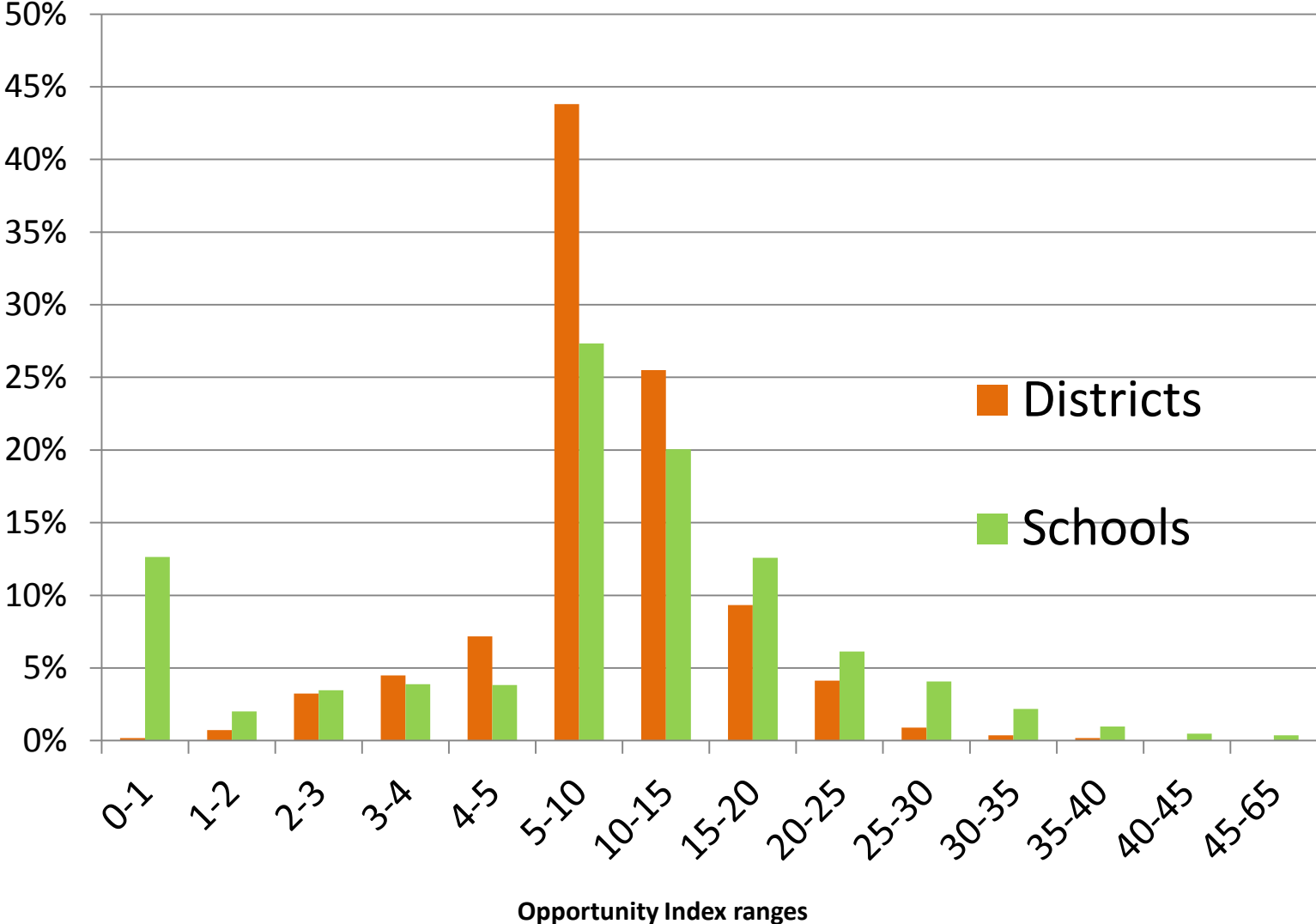
# Gifted Opportunity Index – Example



$$\frac{(\text{40} + \text{11} + \text{11})}{(\text{1000} + \text{40} + \text{1000})} = 3.04$$

The diagram shows the calculation of the Gifted Opportunity Index. The numerator consists of three stacked bars: a yellow bar labeled '% Identified as Gifted' with the value 40, a green bar labeled '% Served among those identified' with the value 11, and another green bar labeled '% Served among total enrollment' with the value 11. The denominator consists of three stacked bars: a light blue bar labeled '1000', a yellow bar labeled '40', and another light blue bar labeled '1000'. The result of the division is 3.04.

# Gifted Opportunity



# Gifted Performance

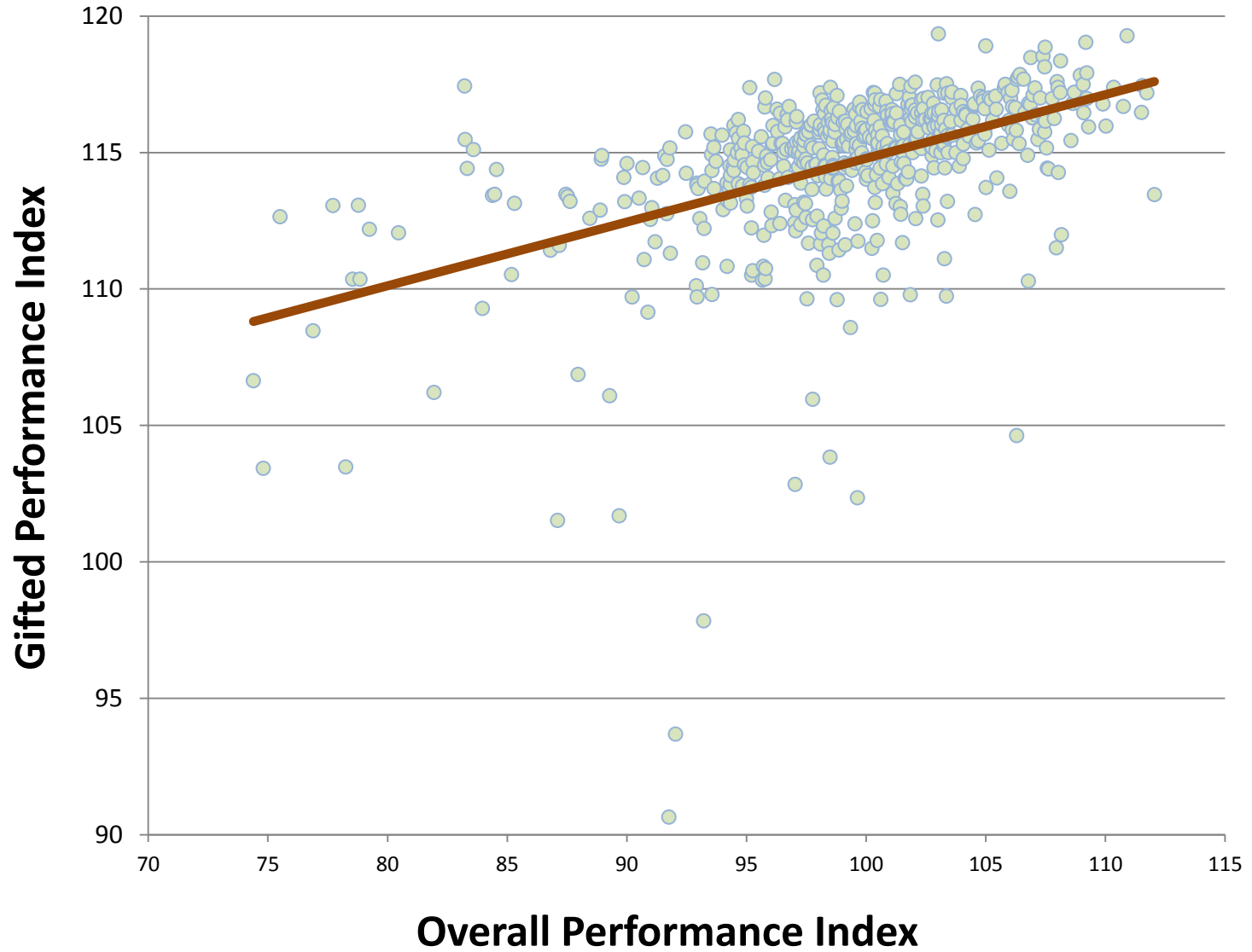
The Gifted Rank uses the Performance Index (PI) score of gifted students to account for performance of gifted students:

- Currently computed from the percentage of gifted students scoring at each achievement level on state tests (subject specific and superior cognitive)

But the Gifted Performance Index closely matches the Overall Performance Index for a school or district



# Relationship of Gifted and Overall PIs

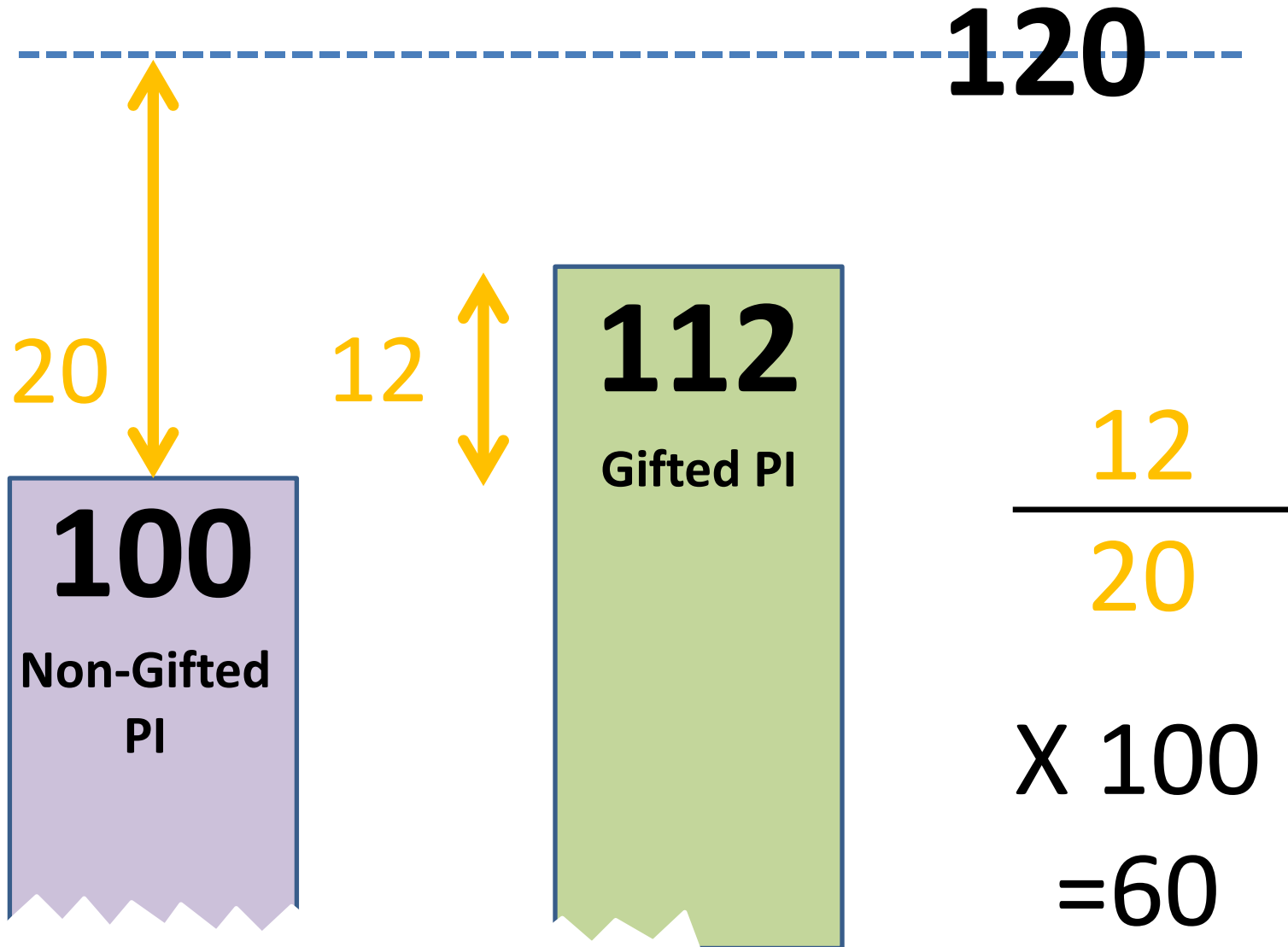


# Gifted Performance - Revised

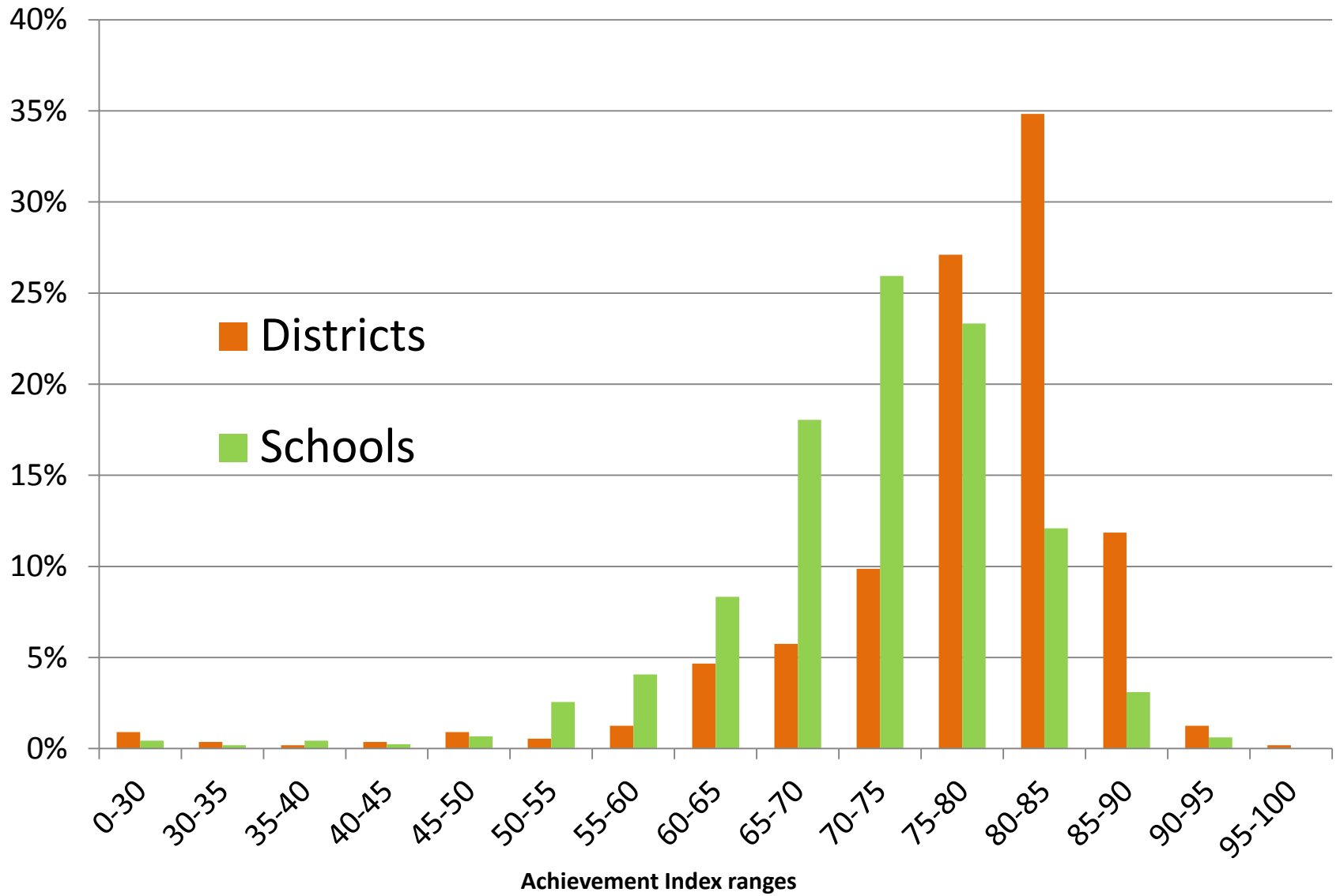
Use the same Performance Index data for gifted students, but compare to non-gifted students in the school or district:

- Gifted Achievement Index – Performance Level of gifted students relative to the Performance Level of school/district as a whole
- 100 point scale
  - 0 means gifted students are performing at the same level (or worse than) non-gifted students in that school/district
  - 100 means ALL gifted students are achieving at the “Advanced Level”

# Gifted Achievement Index Computation



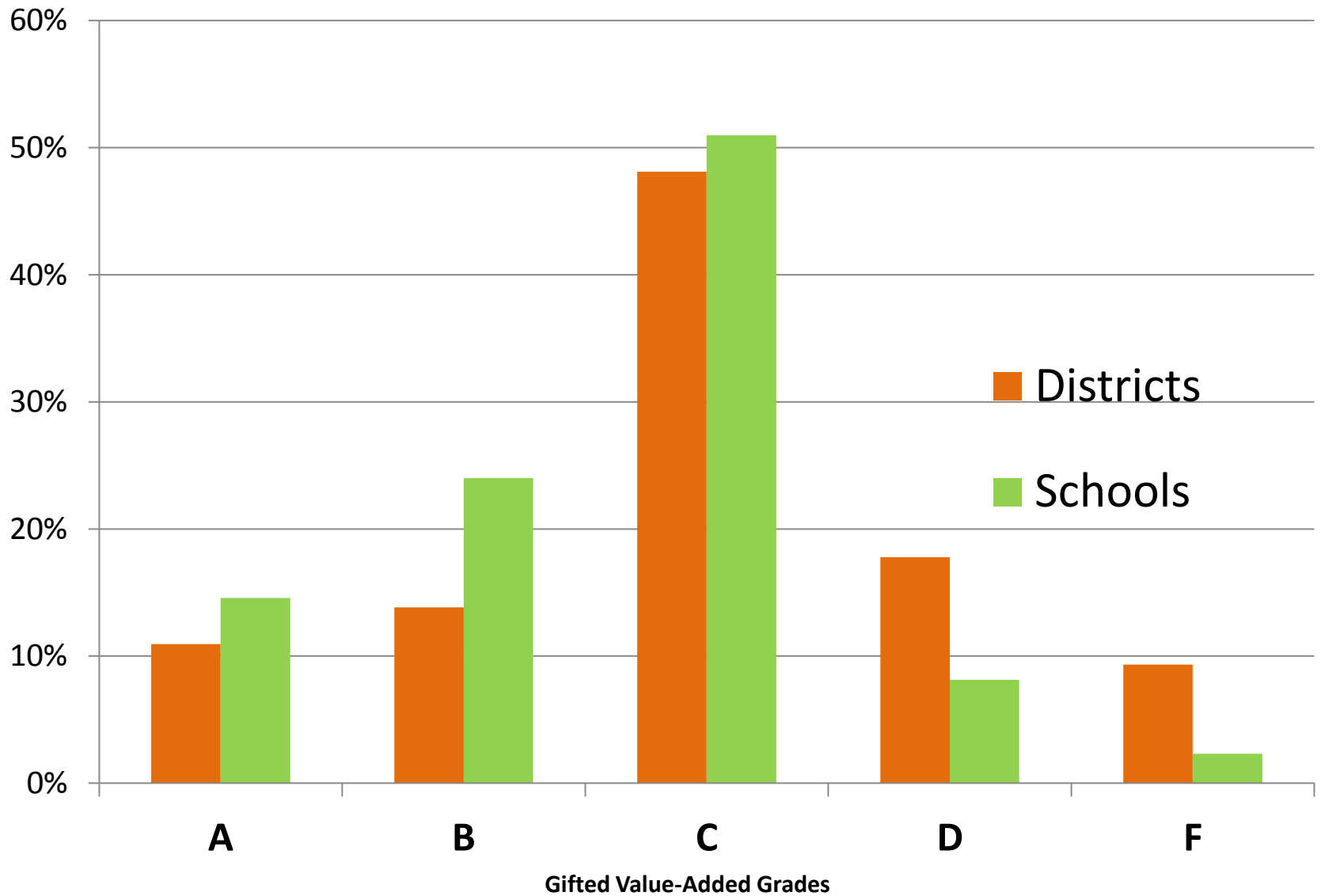
# Gifted Performance



# Gifted Progress – Value-Added

- Value-Added of Gifted Students (Math, Reading, superior cognitive)
- Same measure used for Gifted Value-Added Grade on Report Card

# Gifted Progress



# Gifted Composite Indicator

